



# Microsoft Dynamics 365 Finance and Operations

Capabilities

# Elevate your financial performance

## Increase profitability

Drive margin revenue growth with a centralised, global financial management solution that delivers robust financial intelligence and embedded analytics in real time.

## Optimise workforce productivity

Empower employees with role-based workspaces that provide intelligent automation, task prioritisation, and integration with Office 365 applications to maximise efficiency for superior business outcome.

## Reduce operational expense

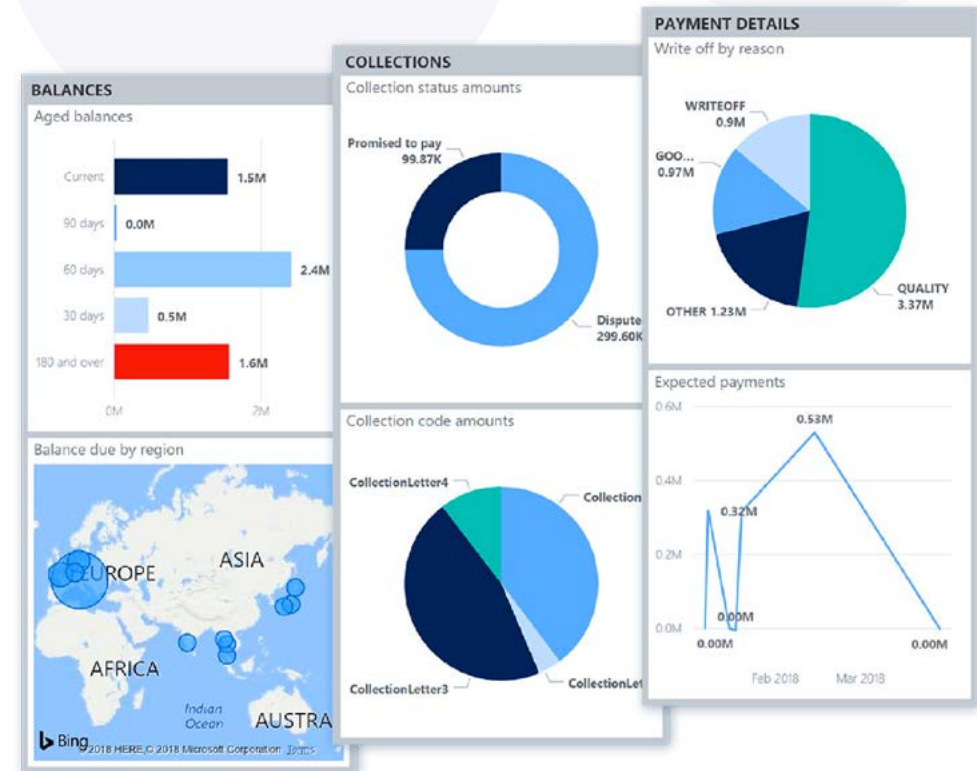
Minimise operational costs across business geographies with financial process automation, encumbrance, budget planning, budget control, and three-way matching.

## Adapt quickly to requirement changes

Adjust to changing financial requirements with a flexible, guided, rules-based chart of accounts, dimensions, and global tax engine.

## Streamline asset management

Efficiently track values and reduce reporting errors with centralised, automated processes for managing your capitalised assets from acquisition through disposal.



# Run smarter with connected operations

## Select best-fit manufacturing processes

Create an ideal manufacturing mix from discrete, lean, and process in a single, unified solution to support your processes across the supply chain.

## Improve operational procedures

Optimise manufacturing parameters for each product family, including make to stock, make to order, pull to order, configure to order, and engineer to order.

## Simplify resource management

Streamline scheduling with real-time visibility into resources using a unified resource model and scheduling engine with Dynamics 365 financial software.

## Accelerate product delivery

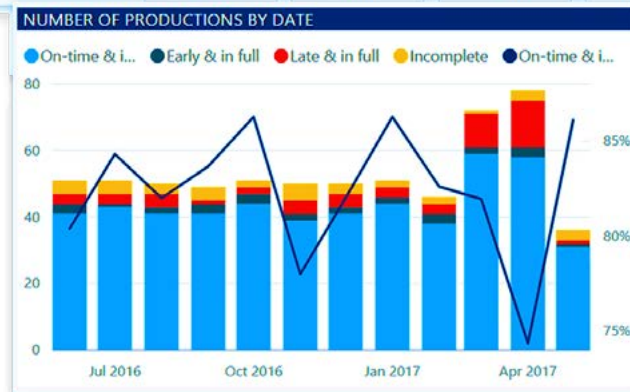
Optimise the flow of manufacturing material and finished goods with advanced warehouse and logistics management.

## Increase quality and customer satisfaction

Improve product quality by identifying and resolving issues through real-time insights and predictive intelligence.

BOTTOM 10 PRODUCTS BY ON TIME & IN FULL				
Item ID	Product name	On-time & in...	Total orders	On-time & in full %
D0002	Cabinet	184	228	80.7 %
D0001	MidRangeSpeaker	153	178	86.0 %
D0005	Car Audio System	149	178	83.7 %
D0111	Ruggedized Laser Projector	34	51	66.7 %

Production performance	TOTAL ORDERS	ON TIME & IN FULL %	INCOMPLETE %	EARLY %	LATE %
	635	82%	6%	6%	9%



# Automate and streamline your supply chain

## Modernise business logistics

Optimise fulfillment and reduce costs by synchronising logistics across sites, warehouses, and transportation modes.

## Deliver timely customer response

Enable faster response to customer demand by automating a seamless coordination of order-to-cash processes.

## Get ahead with predictive insights

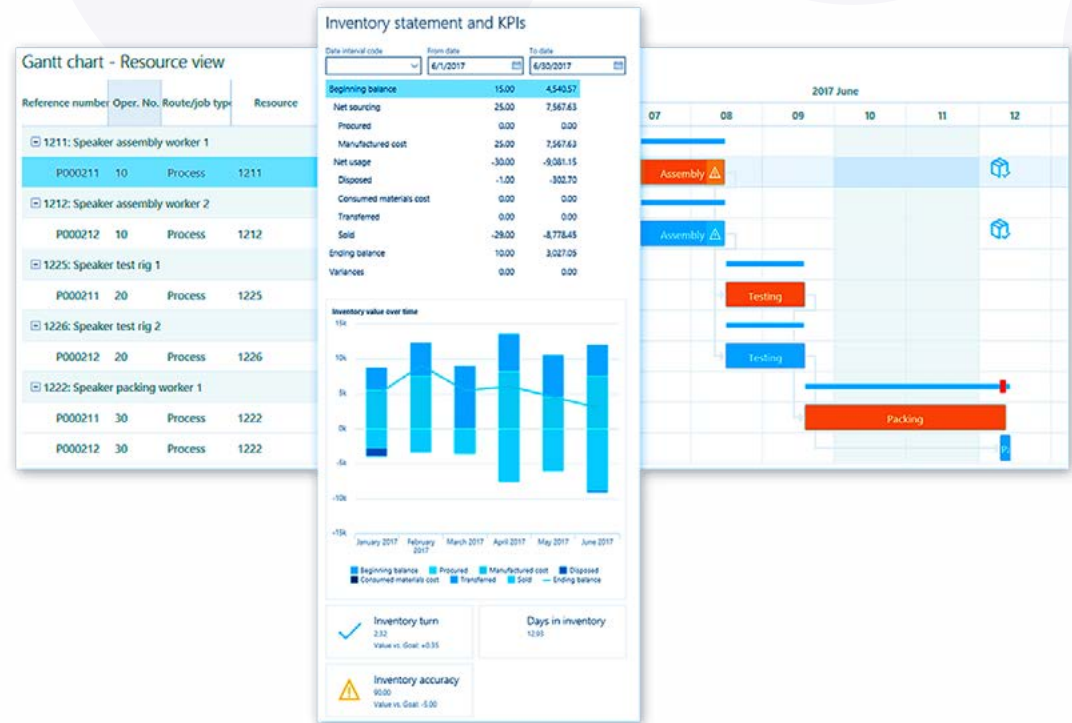
Gain visibility and control across all sites and warehouses for proactive response to issues using dynamics financial analysis.

## Streamline procurement

Reduce procurement costs and gain greater control by automating procure-to-pay processes.

## Unify processes from sales to fulfillment

Seamlessly connect sales and purchasing with logistics, production, and warehouse management for a 360-degree view of your supply chain.





# Innovate with a modern and adaptable platform

## Enable flexible deployment

Drive continuous business growth with rapid, hybrid deployment options that adjust to changing requirements, comply with regulations, and maximise existing investments.

## Adapt quickly

Accelerate time to market and adapt the application to your needs with no-code visual editors and tools that make it easy to build and deploy web and mobile apps.

## Extend and connect

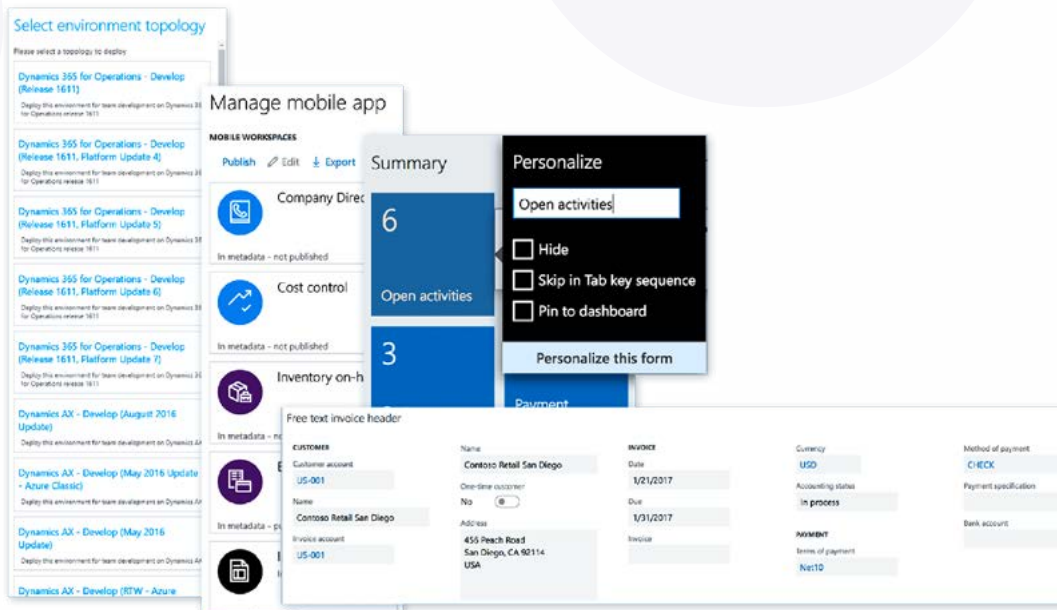
Automate processes across Dynamics 365 financial applications and third-party systems for a unified experience.

## Invest with confidence

Rely on the Microsoft cloud platform to reduce the cost and complexity of operating a global infrastructure and trust our state-of-the-art datacenters to safeguard your data.

## Drive innovation

Transform your customer interactions with deep insights provided by artificial intelligence that guide your teams to the right business outcomes.



# Simplify configuration of your regulatory services

## Use a single regulatory format for multiple software versions

Optimise fulfillment and reduce costs by synchronising logistics across sites, warehouses, and transportation modes.

## Empower your users with no-code configuration services

Enable users with a no-code approach to easily configure frequently changing legal requirements for regulatory reports, e-invoices, payment formats, and tax rules.

The screenshot displays a user interface for a regulatory configuration service. It is divided into several sections:

- Versions:** A table listing different versions of the configuration. The table has columns for 'R...', 'Version', 'Status', 'Effective from', 'Version created', and 'Description'.

R...	Version	Status	Effective from	Version created	Description
2		Draft		6/6/2018 08:09:58 AM	
1		Shared		11/13/2017 12:48:38 AM	KB4054478,KB4054479
- Regulatory configuration service:** A central panel with three main sections:
  - Configurations:** Three blue buttons labeled 'Reporting configurations', 'Metadata configurations', and 'Tax configurations'.
  - Configuration providers:** A list of providers with a checkmark next to 'Microsoft' (http://microsoft.com). Other providers include 'Contoso' (http://www.contoso.com) and 'Litware, Inc.' (http://www.litware.com).
  - Related links:** A list of links including 'Configuration providers', 'Electronic reporting destination', 'Electronic reporting source', 'Electronic reporting parameters', 'Functional/Feature area tags', 'Industry tags', 'Localization blueprint', 'Legal entity filter for formats', and 'Connected applications'.
- PaymentModel:** A detailed view of a data model. It includes a 'Data model' section with a 'Root reference' and a 'GENERAL' section with input fields for 'Name' (containing 'PaymentModel') and 'Description' (containing 'Payment model'). Below this is a 'Node' section with a 'GENERAL' section and input fields for 'Name' (containing 'B2BCORECode') and 'Label (\*Recommended to use labels)' (containing 'B2BCORECode').



Find out more about **Microsoft Dynamics 365**

Call: 0191 500 8150

Email: [info@monpellier.co.uk](mailto:info@monpellier.co.uk)

Visit: [www.monpellier.co.uk](http://www.monpellier.co.uk)

